



Poppet Type Solenoid Valves Series DP



2

Mechanical Characteristic

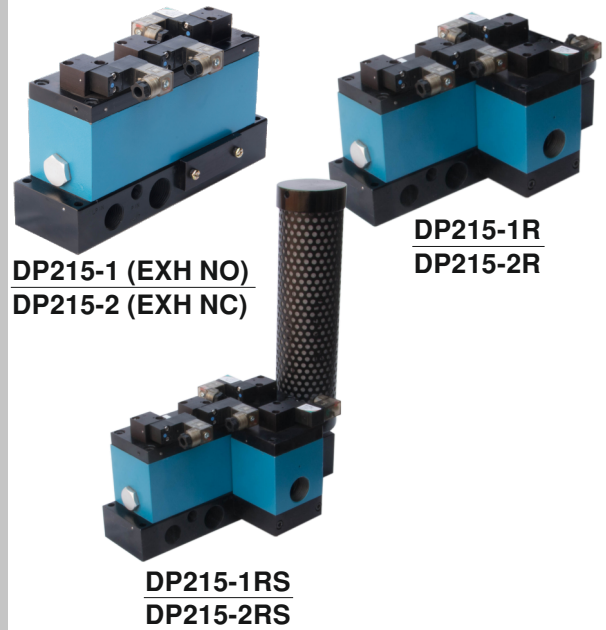
Body	: Aluminum
Orifice	: LP-12mm, H.P-16mm, EXH- 24mm
Ports	: Refer technical data.
Seals	: Nitrite Rubber
Design	: Poppet type, external pilot operated.
Weight	: DP215-1/2 :-3.60 kg, DP215-1R/2R :-4.60kg DP215-1RS/2RS :-6.60kg

Operating Conditions

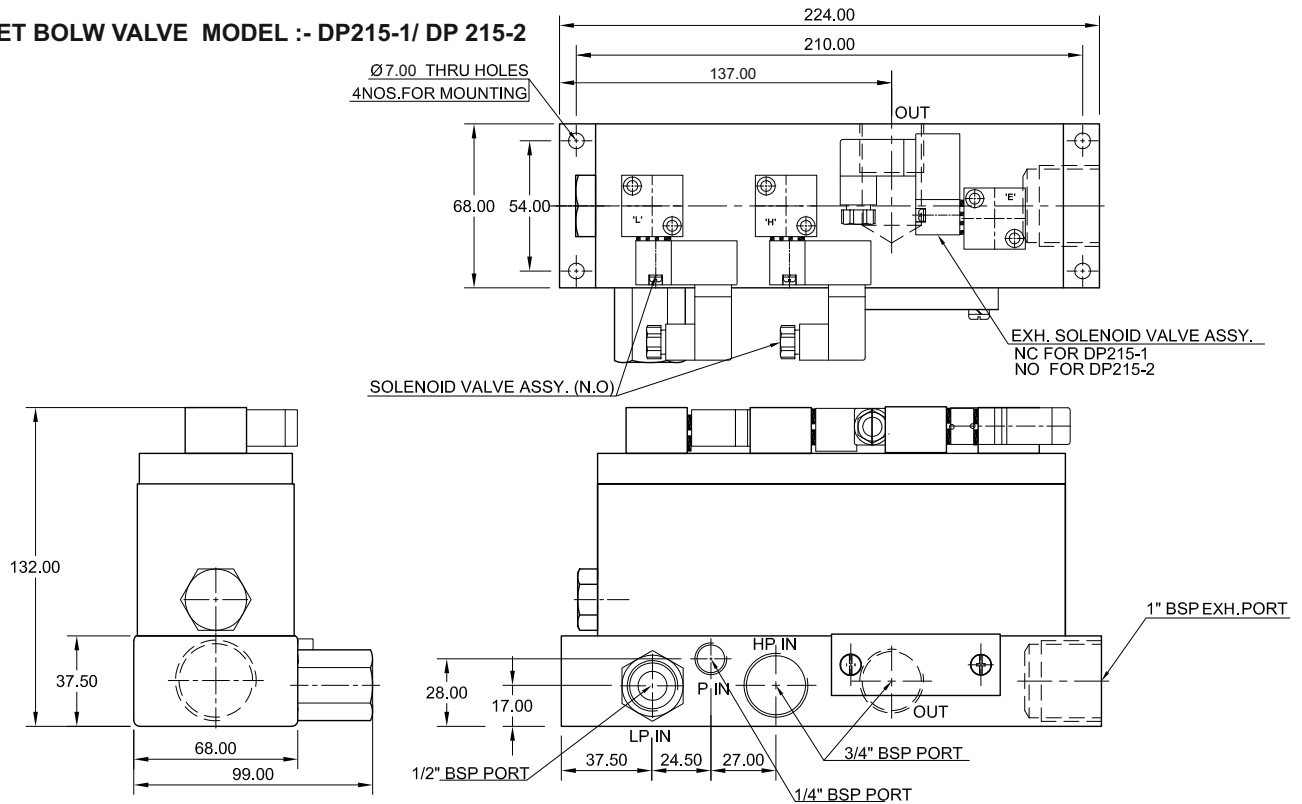
Media	: Air (filtered 40 μ)
Temperature Range	: +5 to +50°C
Pressure Range	: Pilot : 6 to 8 bar LP :- 2 TO 20bar , HP :- 3 To 40bar
Leakage	: Bubble Tight

Electrical Conditions

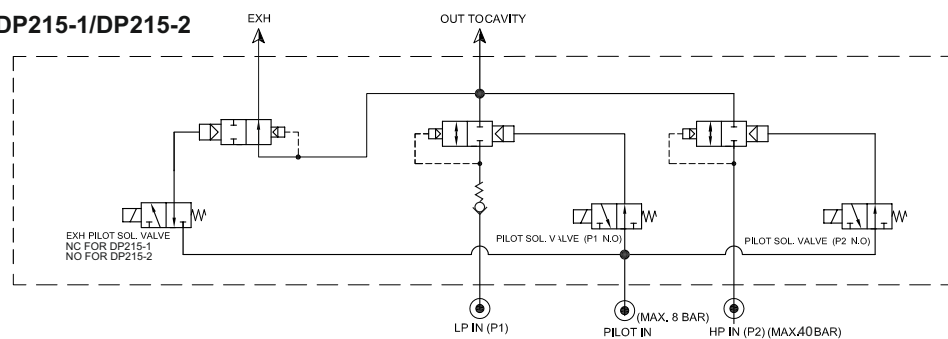
Coil Voltage	: 24 VDC
Power	: 2.3W
Duty Cycle	: Continuous
Protection	: IP 65 (as per DIN 40 050)
Connector	: Illuminated, 15mm formc (9.4mm)



3/4" PET BOLW VALVE MODEL :- DP215-1/ DP 215-2



CIRCUIT DIAGRAM MODEL :- DP215-1/DP215-2



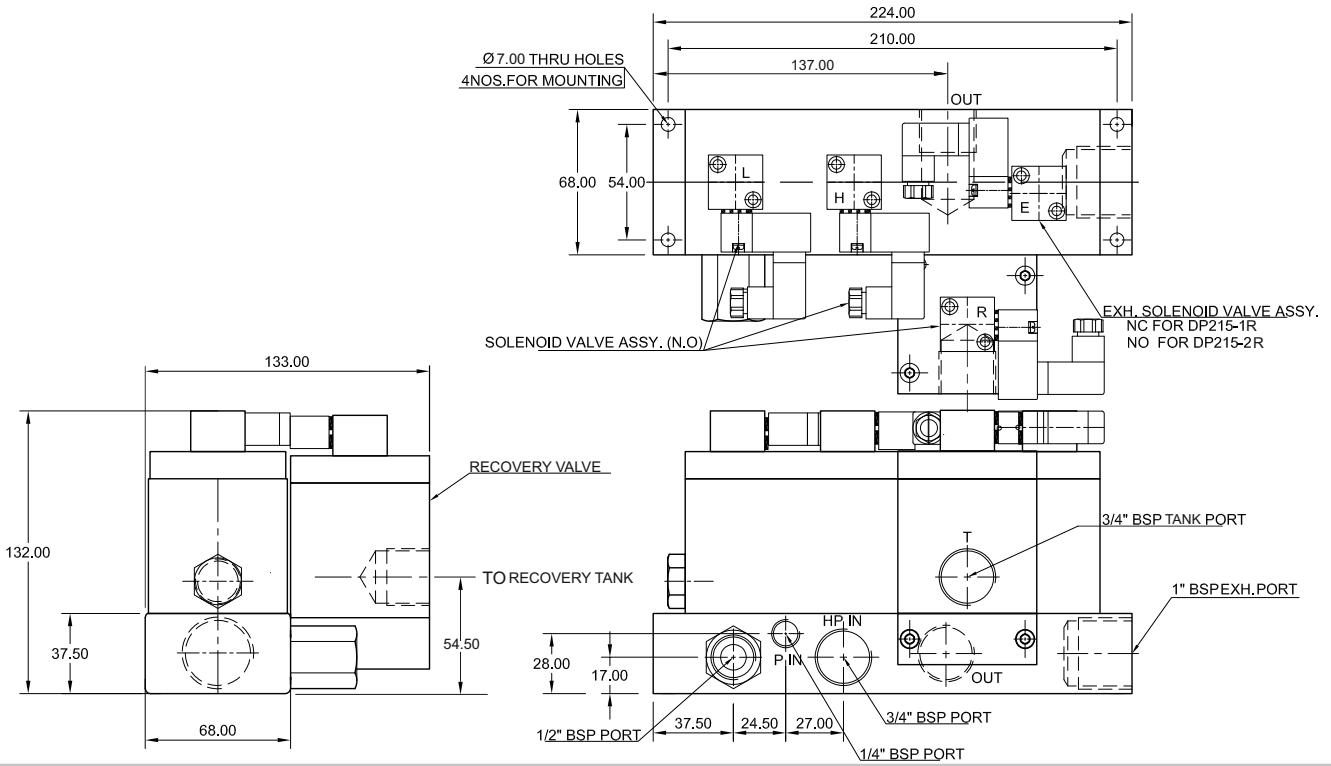


Poppet Type Solenoid Valves Series DP

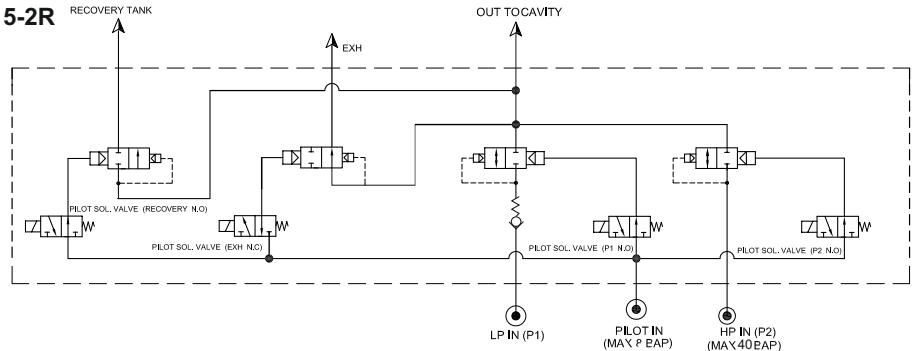


2

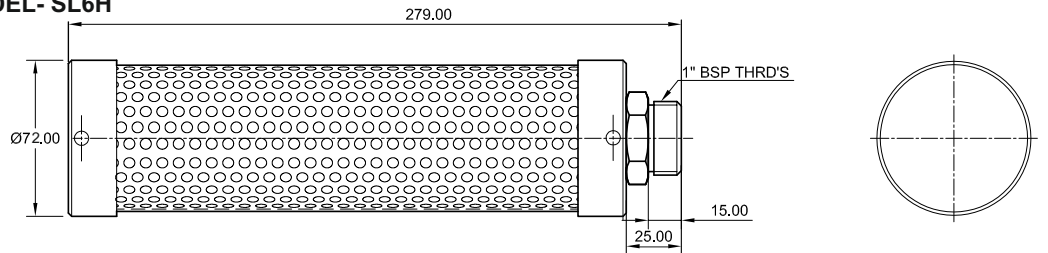
3/4" PET BOLW VALVE WITH RECOVERY MODEL:- DP215-1R/DP215-2R



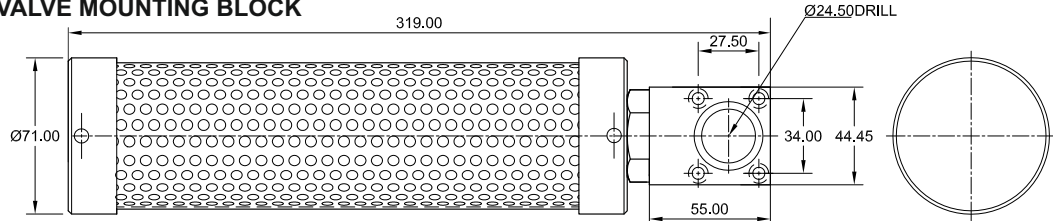
CIRCUIT DIAGRAM MODEL:- DP215-1R/DP215-2R



1" BSP 40 BAR SILENCER :- MODEL- SL6H



1" BSP 40 BAR SILENCER WITH VALVE MOUNTING BLOCK



Technical data	
Hose pressure	- 40 bar
Orifice	- 21.50 mm
Operating temperature	- 0 to 60°C
Sound level	- 90 dBA at 10 bar , 115 dBA at 40 bar
Weight	- 1.7 Kgs.

Note:- Due to constant improvements, dimensions and technical specifications are subjected to change without notice.